

Deployment Target

The VeriStand engine must be installed onto the Real Time target before a project can be deployed to it. The VeriStand version installed on the deployment target must match the development version.

The Power Electronics Add-on supports NI PXI Targets running either PharLap ETS or NI Linux RT operating systems. For more information about NI RT target OS support, refer to [Real-Time Controllers and Real-Time Operating System Compatibility](#).

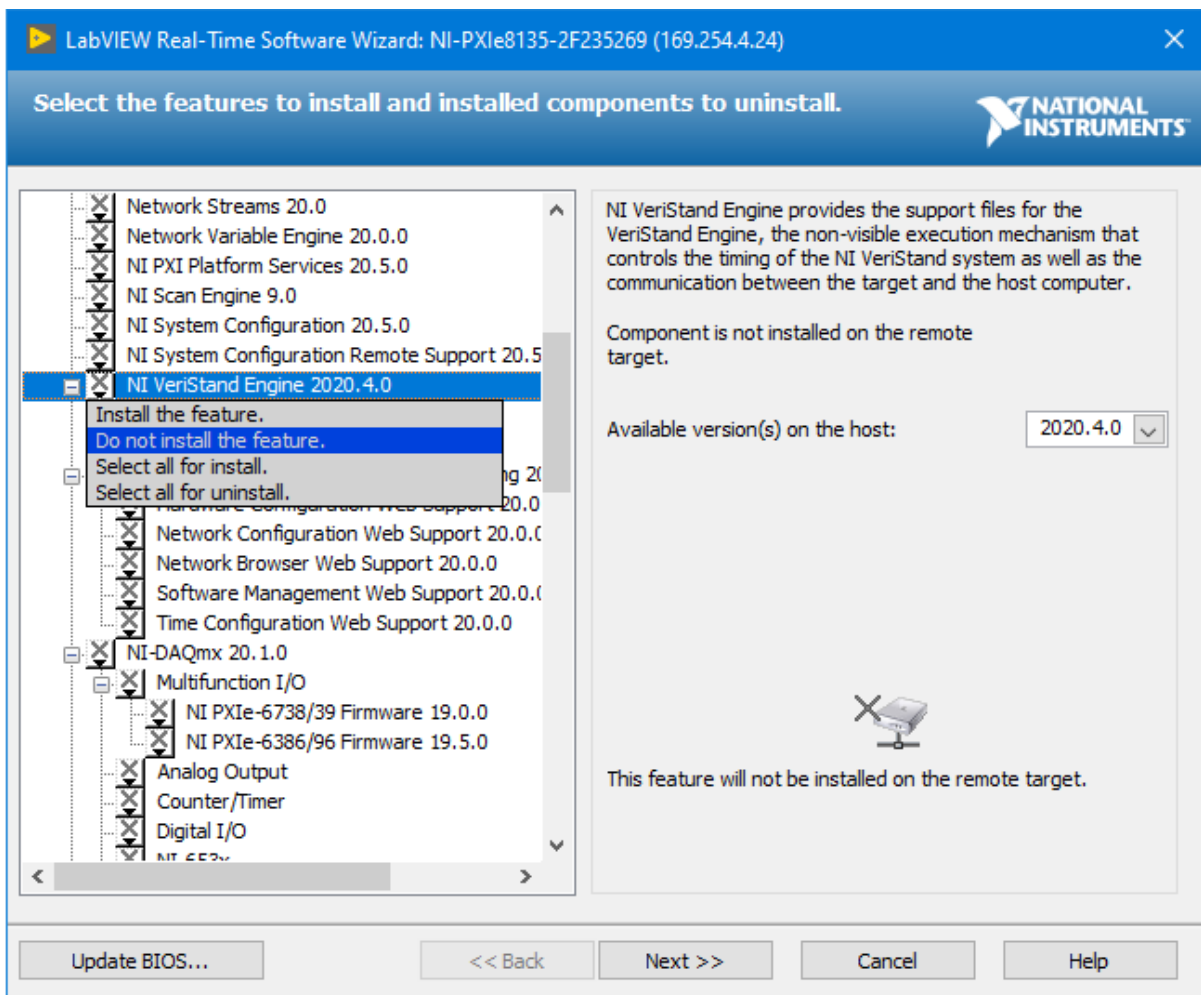
Note: Make sure **Enable Embedded UI** is disabled for the target, as it may conflict with the execution of the Veristand Waveform Processing Loop. This option is found under the target in NI MAX, in the **Startup Settings** section of the **System Settings** tab.

Software Installation on PharLap ETS Targets

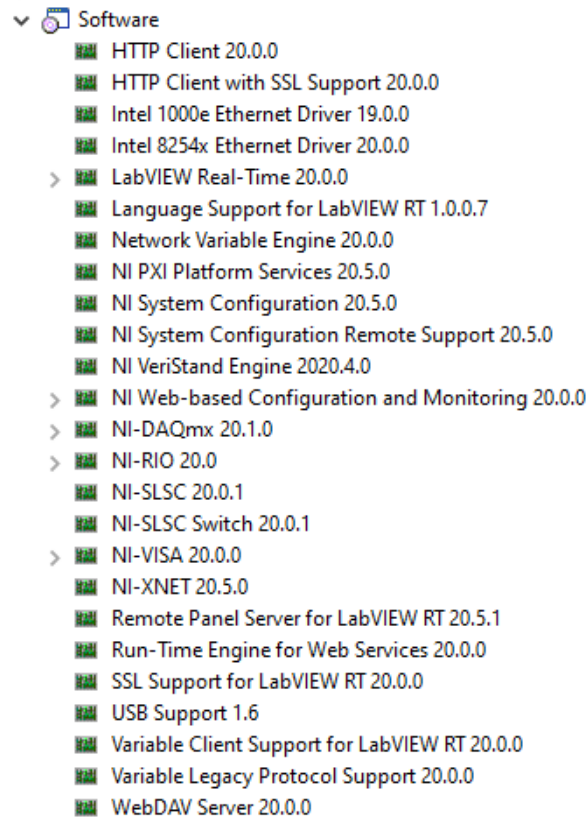
The NI VeriStand Engine can be installed to a PharLap target using the NI Measurement & Automation Explorer. Instructions for the installation process can be found on the NI website:

- [Installing Software on Your Real-Time \(RT\) PXI Controller](#)

When the VeriStand Engine is selected in the Real Time Software Wizard, the necessary dependencies are automatically selected. Other drivers may be required depending on the external hardware being used.



After the installation is complete, confirm that the following software is present under the **Software** tab for the Real Time target. The VeriStand Engine version must match the version on the development machine.



Software Installation on NI Linux RT Targets

The NI VeriStand Engine can be installed to a Linux RT target using the NI Measurement & Automation Explorer. Instructions for the installation process can be found on the NI website:

- [Installing Software on NI Linux Real-Time PXI Controllers](#)
- [Installing Software to Offline NI Linux Real-Time Targets](#)

When selecting a **Base System Image** during the installation, use the latest version available. Select the **Programming Environment** corresponding to your version of VeriStand:

Programming Environment	VeriStand Engine Version
LabVIEW 2020	2020 R4 (20.4.0)
LabVIEW 2019	2019 R3 (19.2.0)

When choosing packages, select **NI VeriStand Engine** and enable **Include recommended packages** to ensure that all necessary dependencies are installed onto the target.

Real-Time Software - NI-PXIe-8840Quad-Core-03141E62 (169.254.185.221)

Base System Image
Linux RT System Image 20.6

Programming Environment
LabVIEW 2020

Add Update Remove [Learn more](#)

Name	Available
<input type="checkbox"/> NI Modulation Toolkit	20.0.0
<input type="checkbox"/> NI PXI Platform Services	20.5.0
<input type="checkbox"/> NI Scan Engine	9.0.0
<input type="checkbox"/> NI Sound and Vibration	20.0.0
<input type="checkbox"/> NI System Configuration	20.5.0
<input type="checkbox"/> NI USRP RIO	20.5.0
<input checked="" type="checkbox"/> NI VeriStand Engine	20.4.0
<input type="checkbox"/> NI Vision	20.6.0
<input type="checkbox"/> NI Vision RIO	20.6.0
<input type="checkbox"/> NI Web-based Configuration and Monitoring	20.5.1
<input type="checkbox"/> NI Wireless Certificate Management Web Service	7.0.0
<input type="checkbox"/> NI-488.2	20.0.0
<input type="checkbox"/> NI-DAQmx	20.1.0
<input type="checkbox"/> NI-DAQmx OPC Server	20.1.0

Add 2 Include recommended packages [Review changes](#) [Cancel](#)