

How to Add a Circuit Model to the System Definition

Prerequisites

[How to Add the Power Electronics Add-On to the System Definition](#)

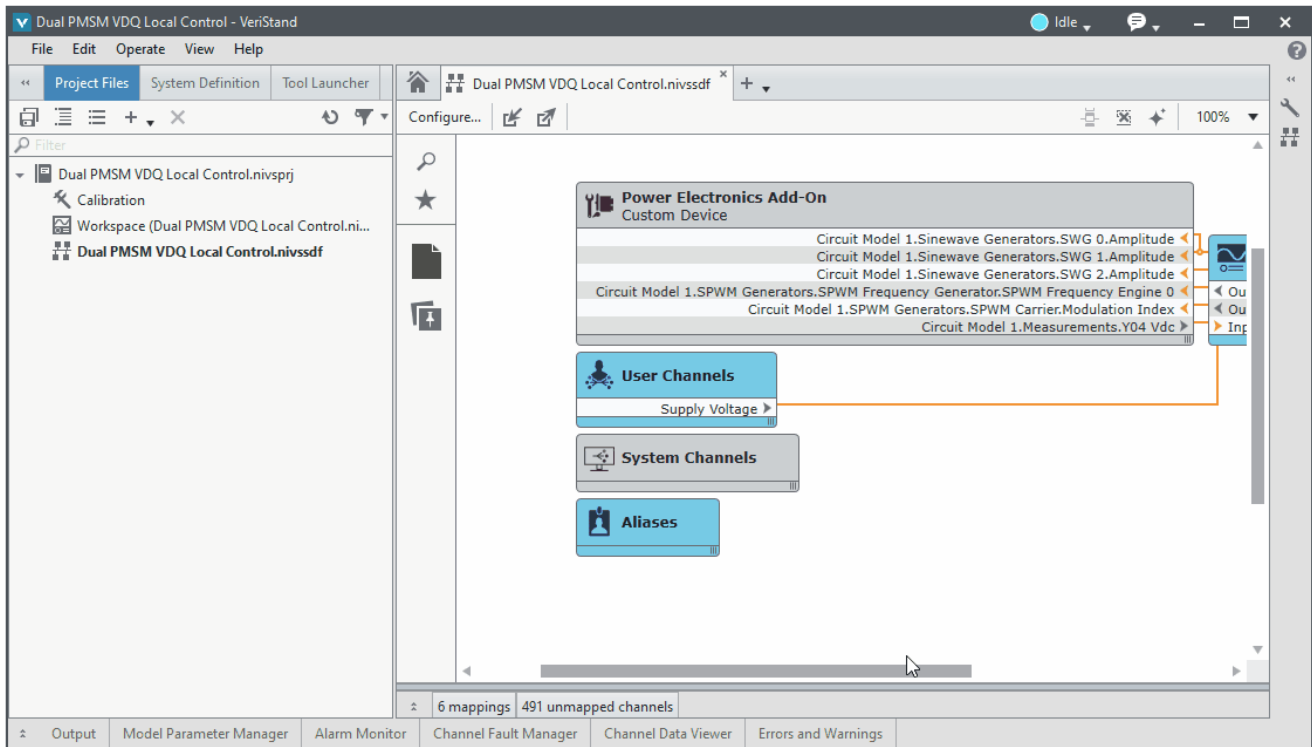
[How to Select a Hardware Configuration](#)

[How to Create a Circuit Model](#)

Procedure

Follow these steps to add a circuit model to the System Definition. This is required before configuring most parameters and mapping options in the Power Electronics Add-On.

1. In the VeriStand Editor, click **Configure...** to launch the System Explorer.
2. Expand the **Power Electronics Add-On** custom device and select a **Circuit Model** section to display the configuration page.
3. Click the **Circuit Model File Path** file browser and navigate to the circuit model file you want to use. Wait for the parsing process to complete. (This may take several seconds)
4. Notice that the **Sources**, **Switches**, and **Measurements** sections have now been updated with the components defined in the circuit.
5. *Optional:* Click the **Refresh** button to retrieve additional information such as the **Minimum Timestep** of the circuit, or the **Number of Scenarios Used**.



Related Links

[How to Use the Scenarios Feature](#)